

JESSICA RATSOY  
MAKEUP ARTIST







1920s



1950s



1960s































Fabricated and applied bald cap





Stretch-and-stipple ageing







Sculpted, fabricated, and applied facial prosthetics with hand-punched brows



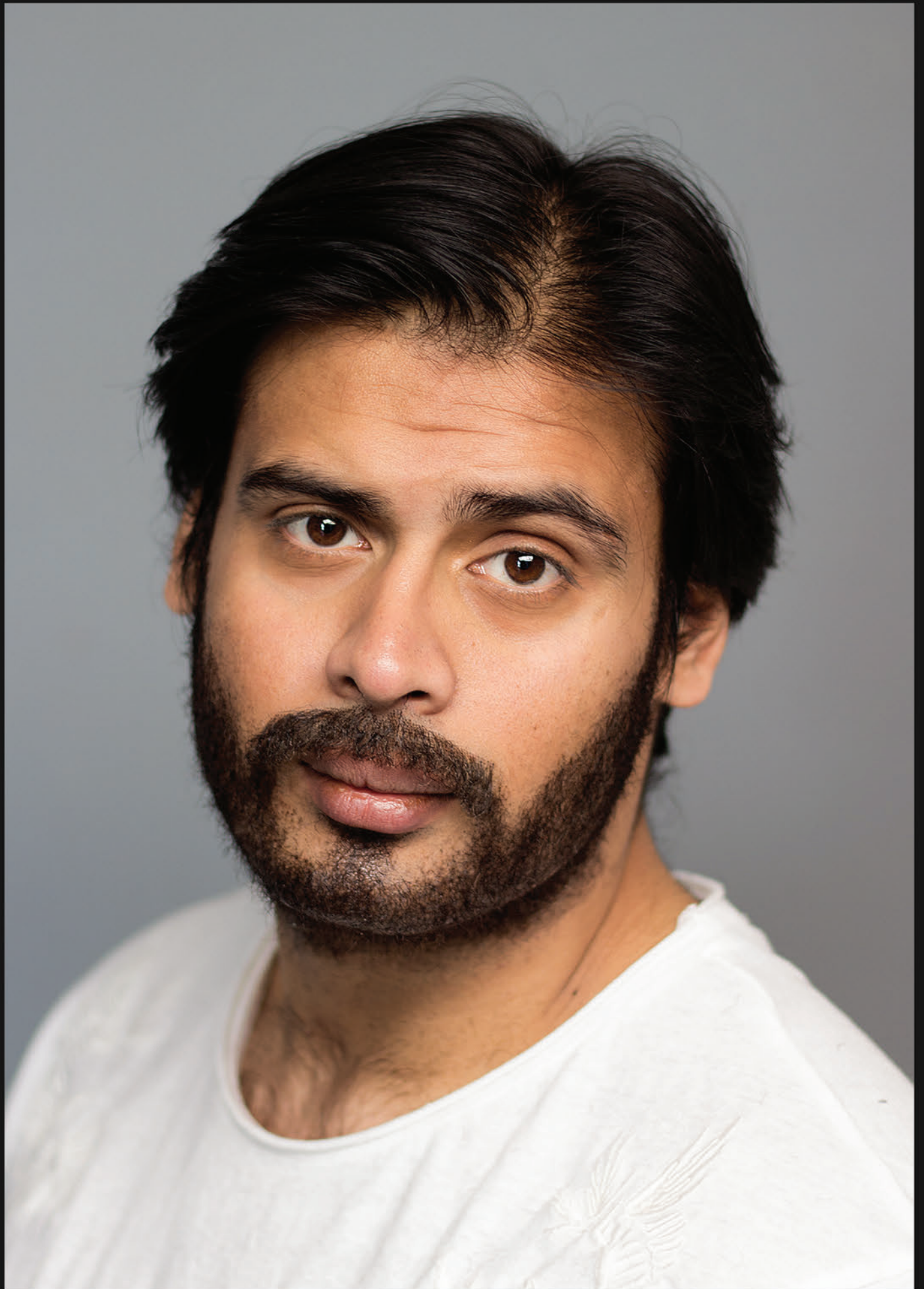




Hand-laid human hair beard







Ventilated and applied lace moustache with hand-laid stubble







Hand-laid goatee



Hand-laid goatee and stubble



Painted beard stipple

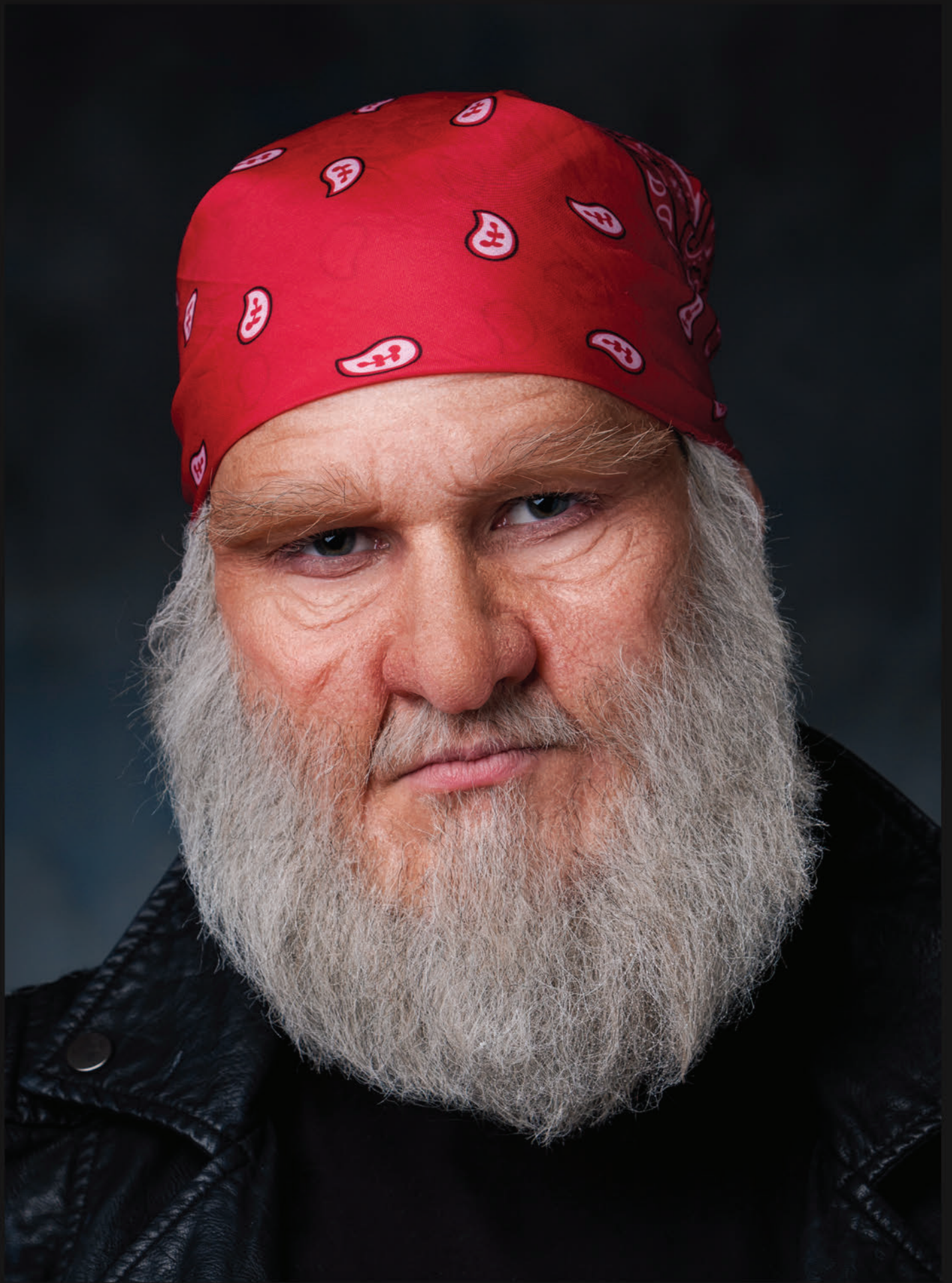


Hand-laid beard stubble









Sculpted, fabricated, and applied gelatine prosthetics with hand-punched eyebrows and hand-laid beard





Sculpted, fabricated, and applied, foam-latex prosthetics with fabricated and applied bald cap  
Sculpt inspired by RBFX





"Yzma" from *The Emperor's New Groove*: painted illusion makeup inspired by Kika Studios



