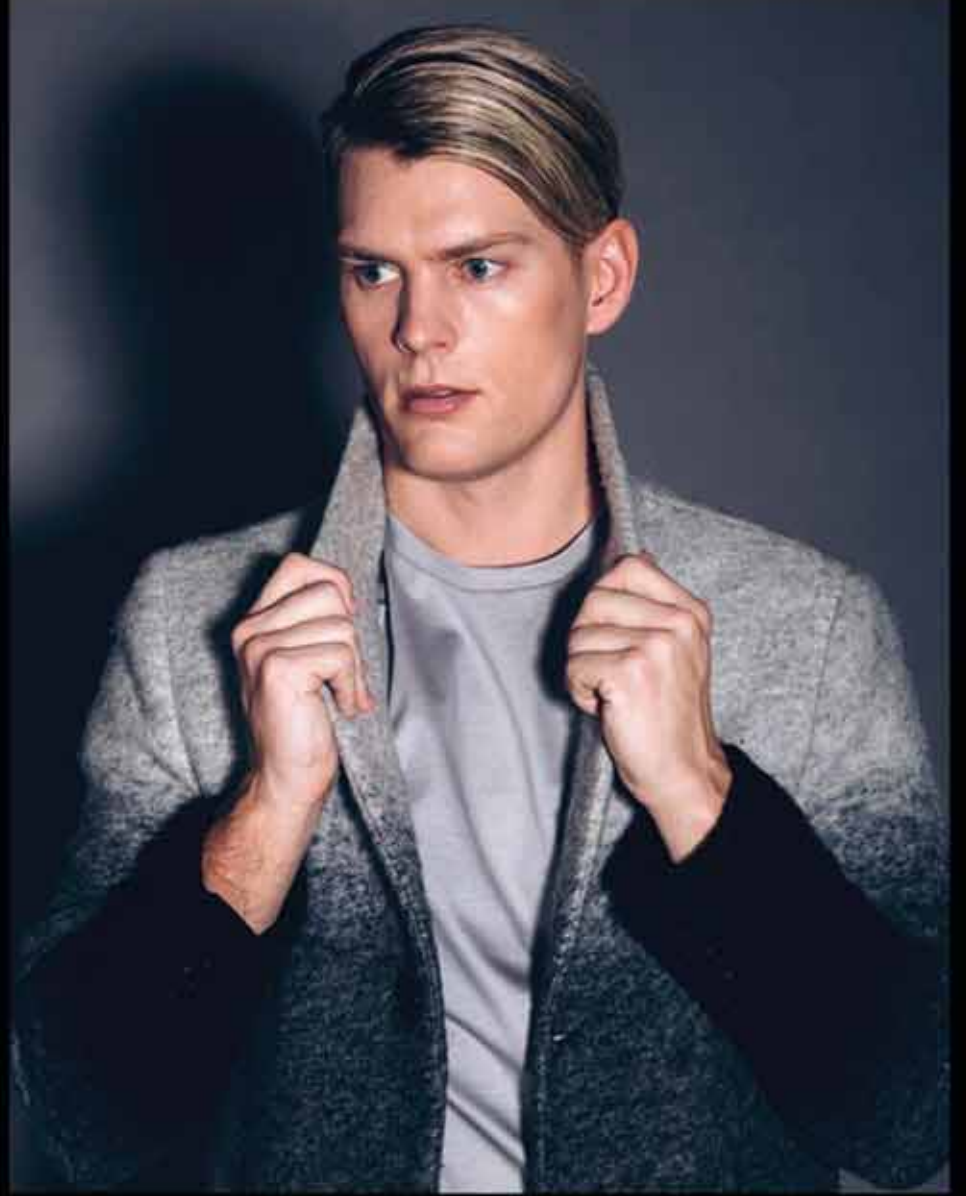


QUINN HEINRICHS

MAKE-UP ARTIST

QUINN HEINRICHS
Make-up Artist





Photography by Devin McGregor





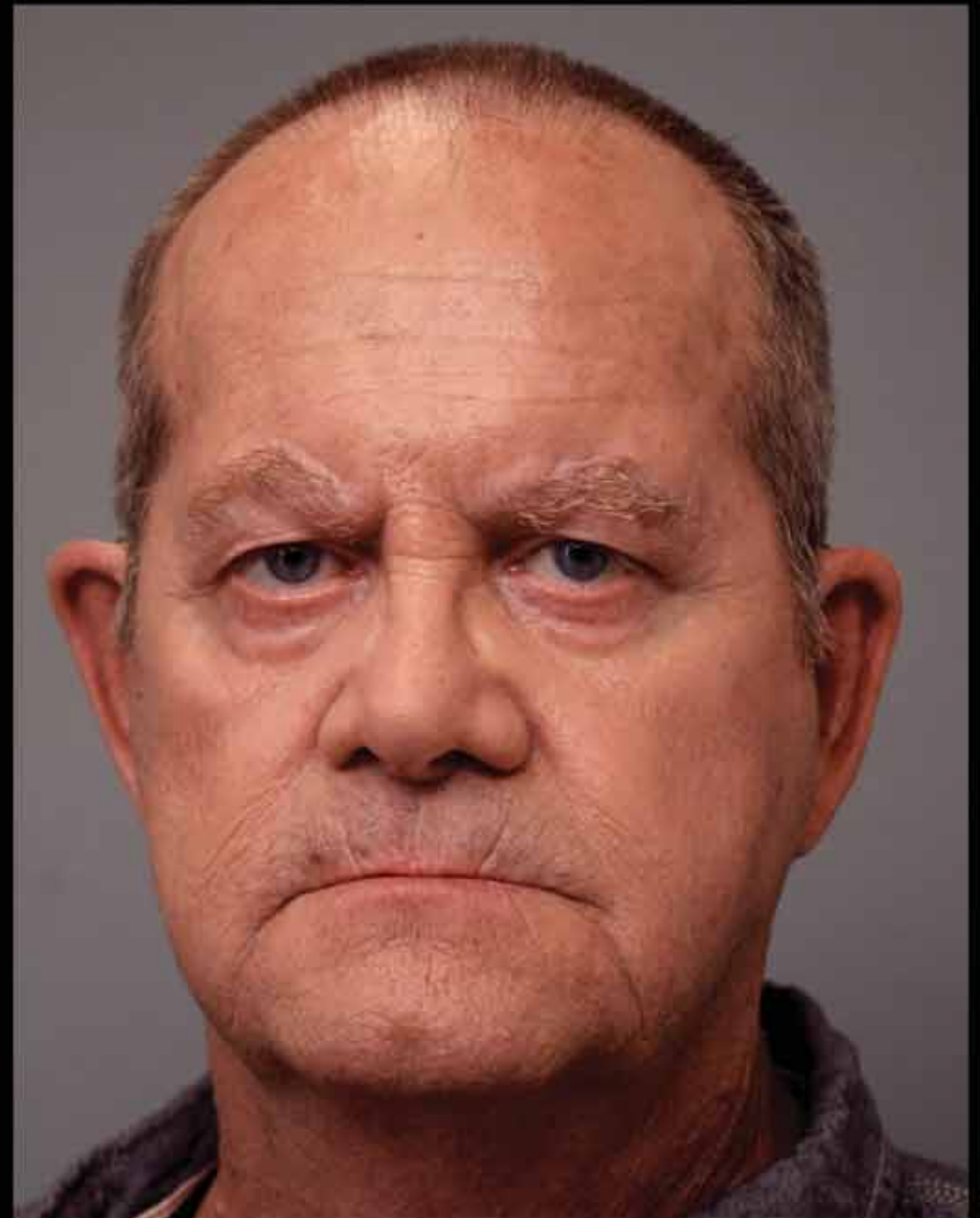
Styled and Applied Wigs



1950s



1960s





Fabricated and applied bald caps

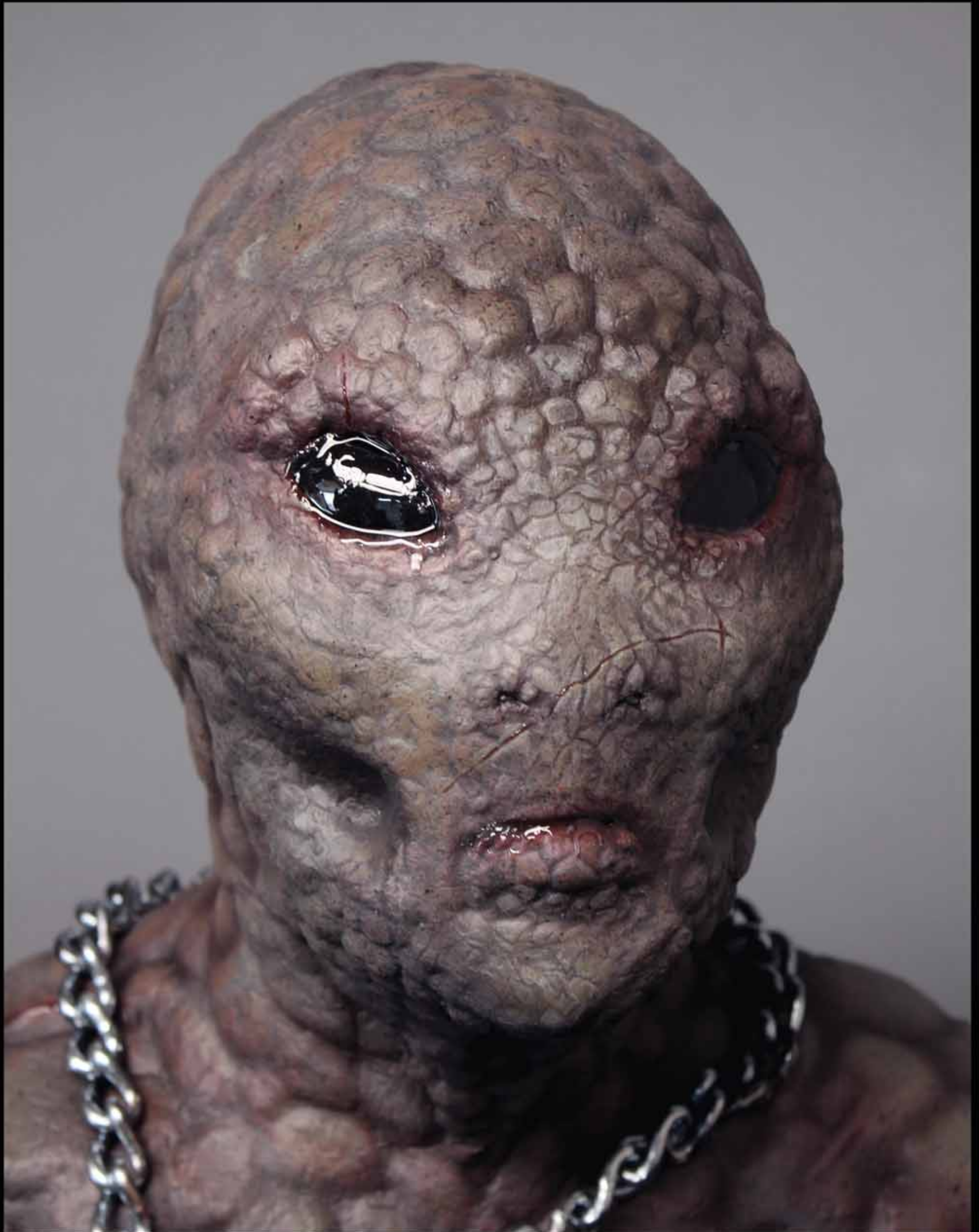


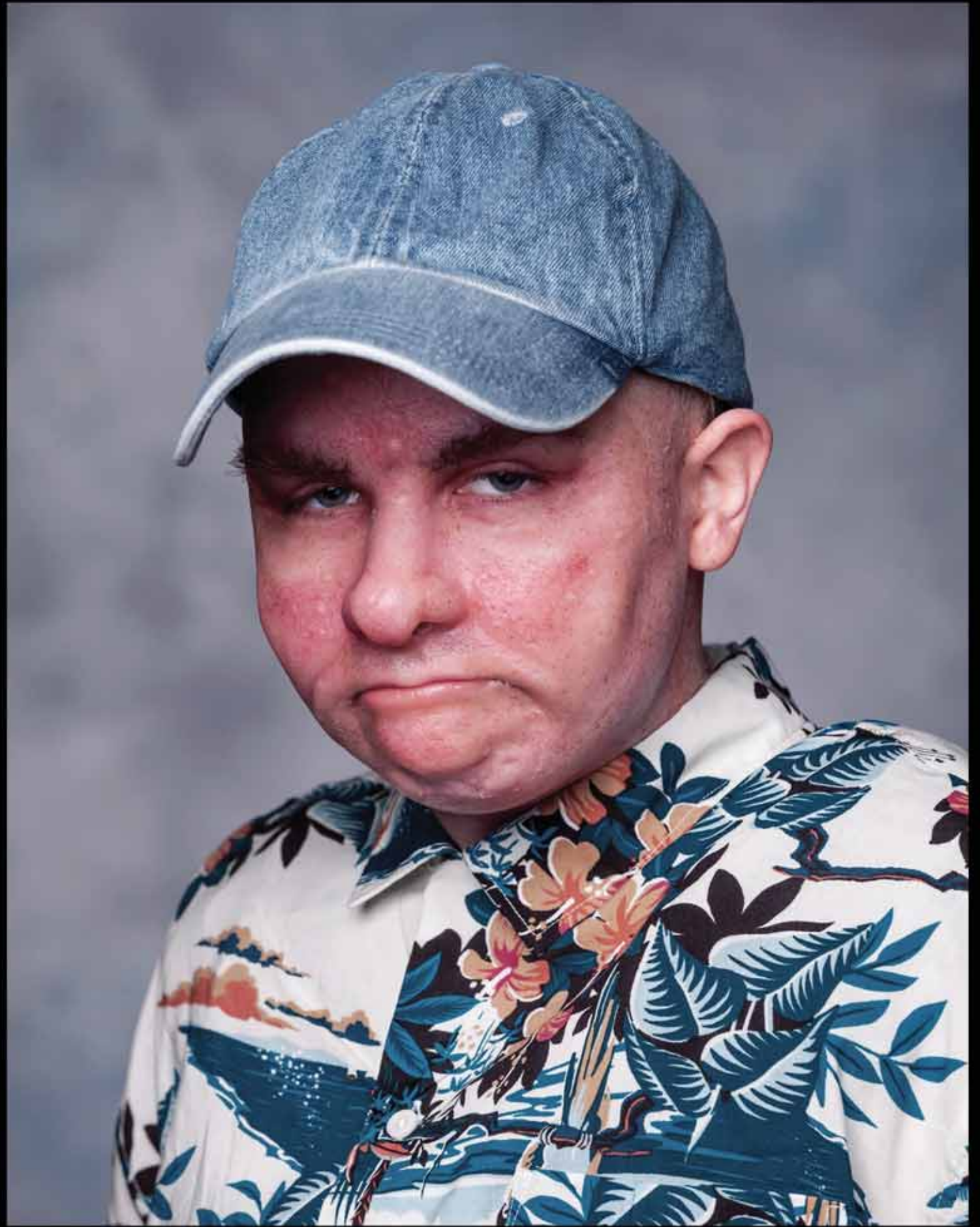


Ventilated Moustache (Top) and Hand Laid Facial Hair









Fabricated and applied gelatin prosthetics and bald cap
Hand punched eyebrows and facial hair



Fabricated and applied foam latex prosthetics and bald cap
Ventilated and hand laid hair