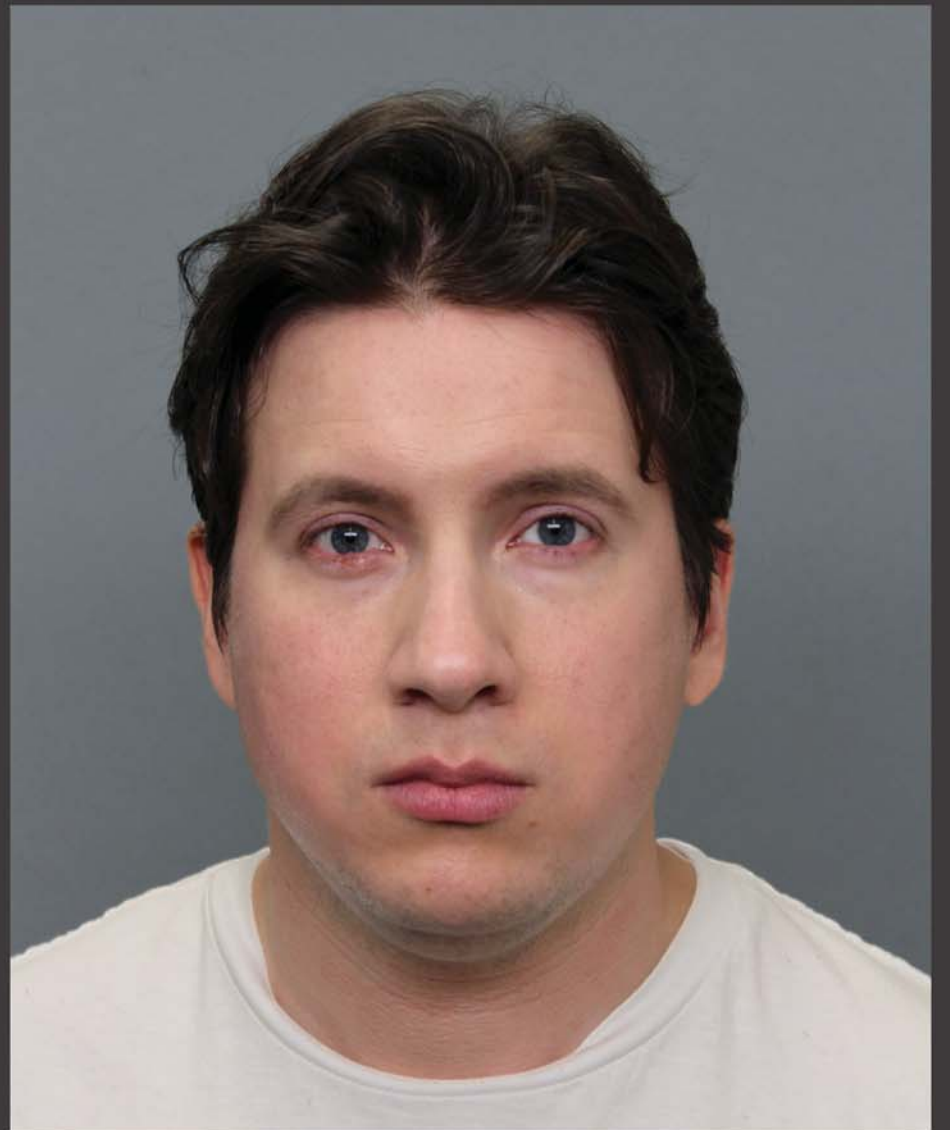


BRITTANY JOHNSTON
MAKE-UP ARTIST









1930s



1960s

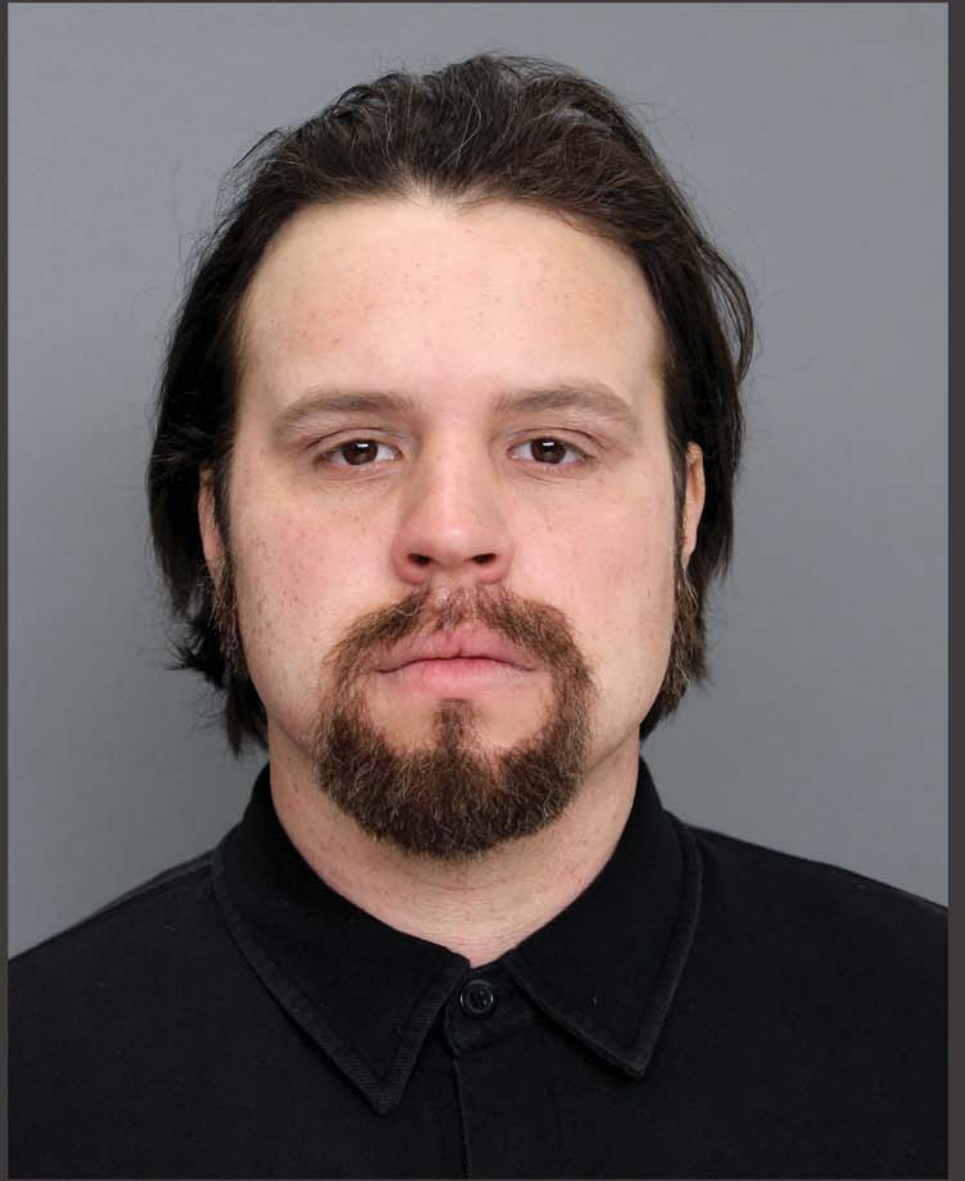








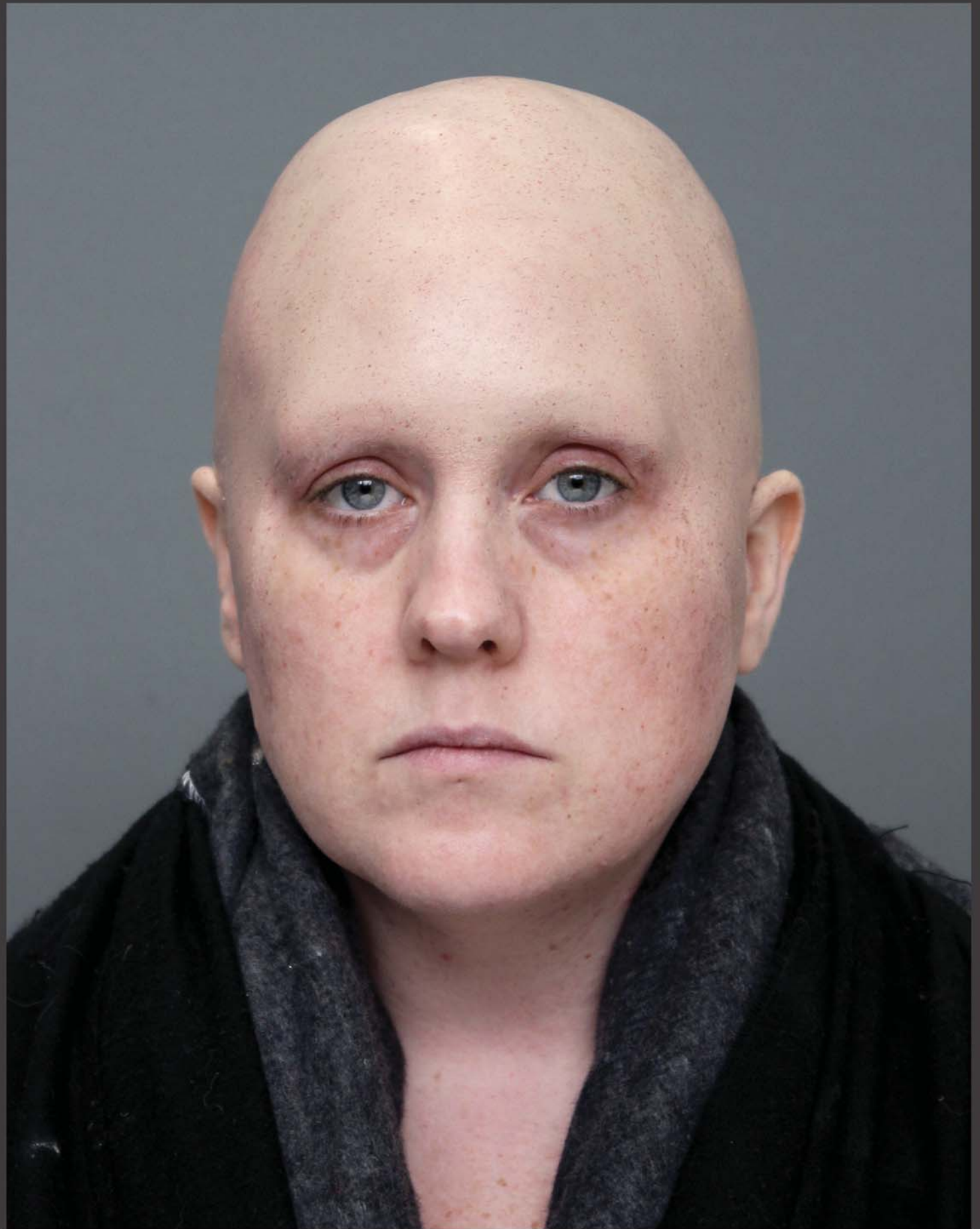




HAND LAID FACIAL HAIR

VENTILATED AND APPLIED LACE MOUSTACHE







FABRICATED AND APPLIED PROSTHETICS WITH PUNCHED EYEBROWS
AND HAND LAID FACIAL HAIR





TANDEM APPLICATION WITH EMMA WATT



FABRICATED AND APPLIED HORNS AND BALD CAP



FABRICATED AND APPLIED HORNS AND BALD CAP



FABRICATED LATEX MASK INSPIRED BY "THE CREEPER" FROM THE FILM "JEEPERS CREEPERS"

